



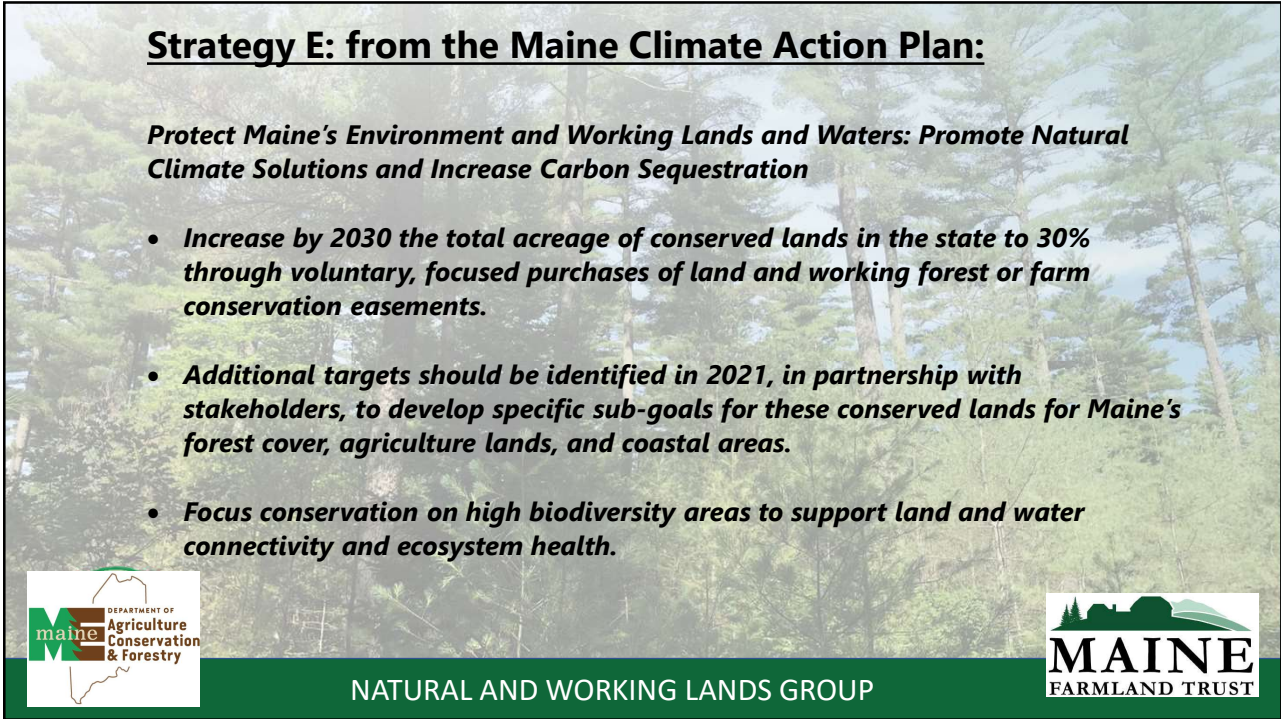
30% Land Goal

Maine Climate Council
Natural and Working Lands Group
November 29, 2023

Andy Cutko and Adam Bishop, Co-Facilitators





1



Strategy E: from the Maine Climate Action Plan:

Protect Maine's Environment and Working Lands and Waters: Promote Natural Climate Solutions and Increase Carbon Sequestration

- *Increase by 2030 the total acreage of conserved lands in the state to 30% through voluntary, focused purchases of land and working forest or farm conservation easements.*
- *Additional targets should be identified in 2021, in partnership with stakeholders, to develop specific sub-goals for these conserved lands for Maine's forest cover, agriculture lands, and coastal areas.*
- *Focus conservation on high biodiversity areas to support land and water connectivity and ecosystem health.*



NATURAL AND WORKING LANDS GROUP

2

From 2022 Progress Report:

- 4,336,772 acres is conserved, or
- 22.0% of Maine’s land
- Most is in northern & western Maine, least in southern Maine
- Mountaintops and wetlands are the most well represented

To Reach 30% by 2030:

- Need to conserve ~1,600,000 acres (~225K/year for the next 7 years)
- This includes at least 190,000 farmland acres
- This is ~5X our recent rate of conservation

NATURAL AND WORKING LANDS GROUP

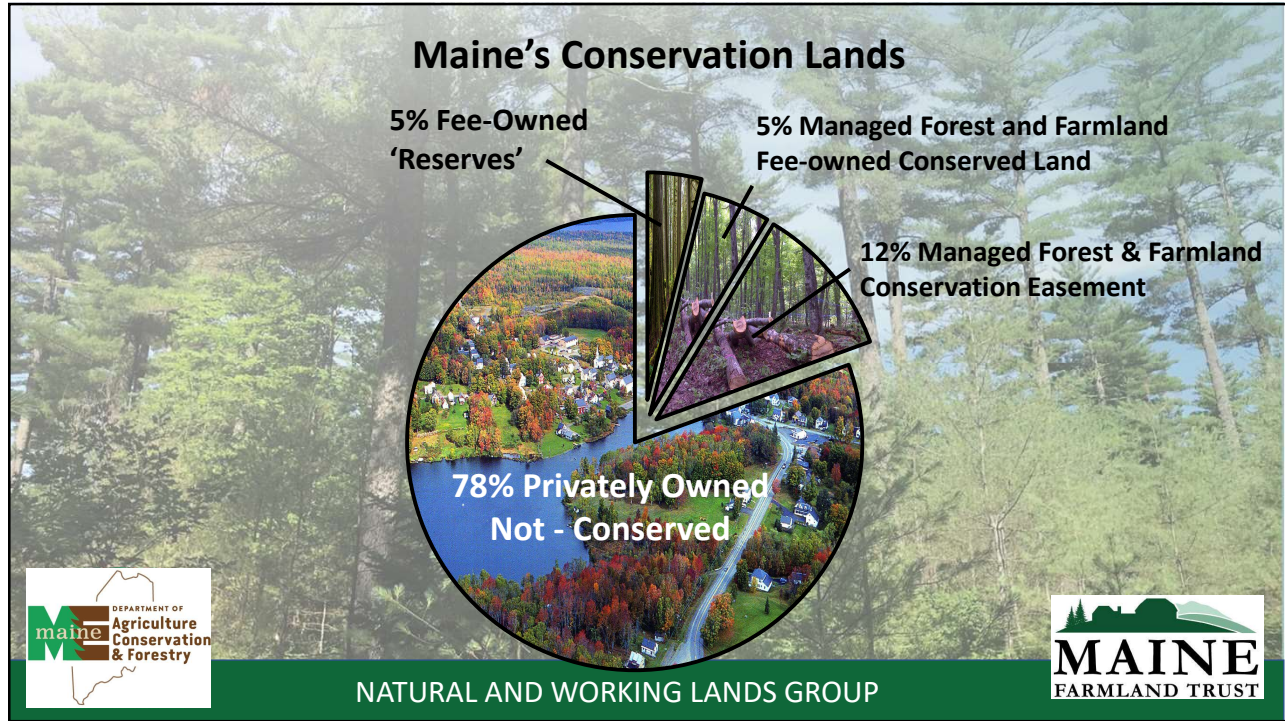
3

What is included in ‘Conserved Lands’

- Lands in the state’s Conserved Lands Database/GIS layer, maintained by MNAP
- Land that is *permanently* conserved
- Owned by non-profits or state, federal, and local governments
- Includes both fee-owned parcels and forest and farmland easements

NATURAL AND WORKING LANDS GROUP

4



5

Farmland Conservation Lags Behind

- Maine lost 10% of its farmland between 2012 and 2017.
- Compared to forests and wetlands, much less of Maine's remaining farmland has been conserved. According to MFT, only 3.5% of the existing open, farmable land in Maine with prime farmland or agricultural soils of statewide significance is permanently conserved.
- Maine lags far behind most of the northeastern US in the percentage of agricultural lands conserved.



NATURAL AND WORKING LANDS GROUP



6

30% Land Goal: Key Questions

- How should we weigh the numerous conservation priorities: working farmland, biodiversity (e.g., ecological reserves), tribal access and priorities, public access, recreation, ecosystem services (e.g., drinking water), working forests, coastal systems, resilient landscapes, etc.?
- What is the impact of our geographic representation of conserved lands, and how should we consider geography in future conservation efforts?
- How we build capacity quickly to execute land conservation projects?
- How can we leverage various funding sources necessary to reach the 2030 goal?
- How can we ensure greater equity in access to conservation lands and input on land acquisition and management?



NATURAL AND WORKING LANDS GROUP

